

Standard Thermocouple Connector Socket



Features

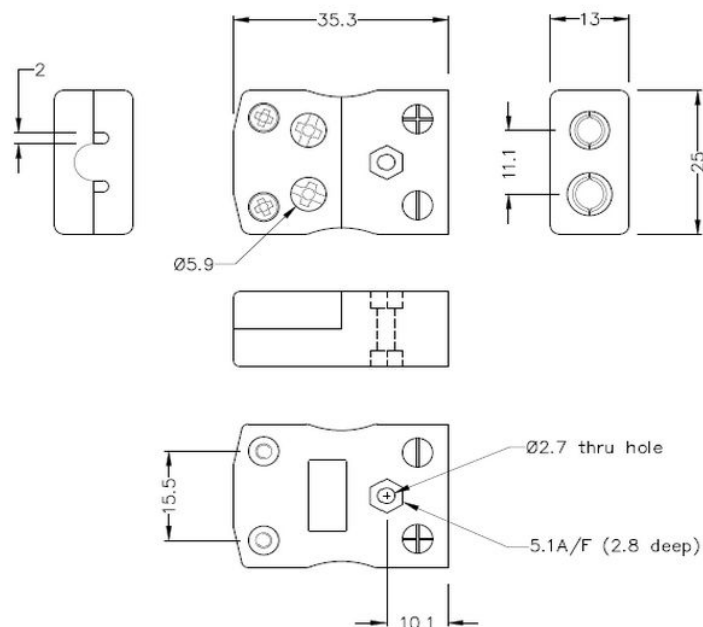
- Easy 'jab-in' connection for rapid termination
- Just push wire in and tighten screw
- Contacts are polarised to prevent incorrect connection



Specification

| | |
|-------------------|------------------------|
| Sensor Type | T |
| Connector Size | Standard |
| Connector Type | Quick Wire Socket |
| Colour | Brown |
| Max. Temperature | 220 °C |
| +Positive Contact | Cu |
| -Negative Contact | CuNi |
| Standards Met | BS EN 50212:1997; RoHS |

Drawing



Standard in-line Socket - Quick Wire
(dimensions in mm)

Art. Nr.
RND 410-00224